

SCREEN



CREATING A FUTURE
IN PRINT

Truepress Jet
L350uv SAI Series

UV Inkjet Label Printing System

*Exceptional Color Reproduction
For Label Printing*

More than
180
systems sold



Exceptional Color Reproduction For Label Printing

Truepress Jet L350UV SAI



Print size: Up to 12.6" (322 mm) wide
Media width: 4" to 13.7" (100 to 350 mm)
Media thickness: 1.6 to 13.7 mil (0.04 to 0.35 mm)
Roll diameter: 29.5" (750 mm)
Resolution: 600 x 600 dpi

Features

**HIGH
PRODUCTIVITY
AND
QUALITY**

High productivity label printing system at 60 m/m supports wide range of applications with high quality.

STABILITY

Outstanding stability enables same print quality on repeat jobs regardless of operator skill level.

**EASY
OPERATION**

Easy touch panel operation simplifies high quality printing and automated maintenance such as head cleaning.

**BROAD
APPLICATION**

Truepress inks for L350UV SAI Series have been developed for a wide range of applications and compliance with many global ink regulations.

Four Models Specially Designed To Meet Any Requirements

	E model Entry model	S model Standard model	LM model Food packaging labels model
Ink configuration	Standard: CMYK Additional: White, Orange	Standard: CMYKW Additional: Orange, Blue	Standard: CMYKW Additional: Orange
Productivity	Full color: 164 ft/min + White: 98.5 ft/min	Full color: 197 ft/min + White: 98.5 ft/min*	Full color: 197 ft/min + White: 98.5 ft/min

*165 ft/min available as an option.

Ink Lineup

Standard ink
Truepress ink for L350UV SAI Series

All purpose inks with a wide color gamut and outstanding media compatibility expands business opportunities.

Compliance with main ink regulations

- European Printing Ink Association (EuPIA) Guidelines
- EuPIA Exclusion List for Printing Inks and Related Products
- EuPIA Good Manufacturing Practice (GMP) Printing Inks for Food Contact Materials
- Positive list on Swiss Ordinance (SR 817.023.021 Annex 6, 10)*
- Nestle Guidance (August 2016)*
- VOC: Directive 1999/13/EC
- Latex: No latex introduced during manufacturing.
- REACH (SVHC): The 191 substances which had been listed in the SVHC candidate lists up to REACH 19th are not present in amounts of 0.1% or more.
- RoHS: Commission delegated Directive (EU) 2015/863 of 31 March 2015

* Only Truepress ink for L350UV SAI LM

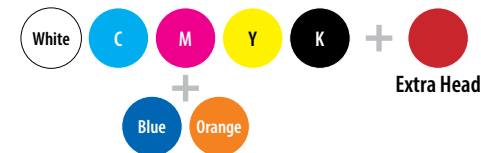
Low migration ink
Truepress ink for L350UV SAI LM

Specially developed for food packaging applications and only for LM model. These inks minimize the migration of components compared to standard inks.

HIGH QUALITY

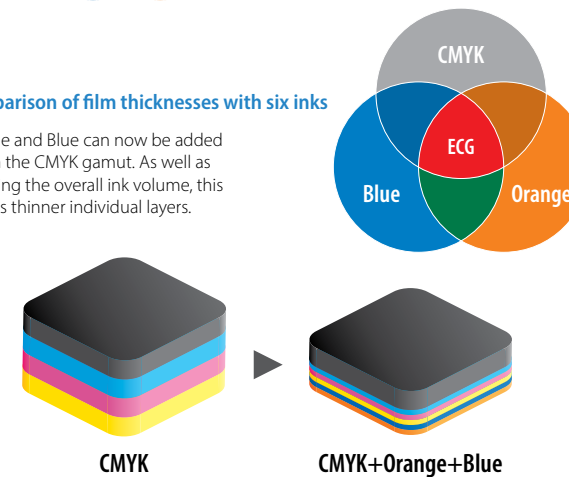
Expanded Color Gamut (ECG) inks ensure superior color reproduction while an extra printhead provides optimum scalability

Orange and Blue Inks provide Expanded Color Gamut capabilities. Reproduce spot colors with ECG capabilities without increased ink usage.



Comparison of film thicknesses with six inks

Orange and Blue can now be added within the CMYK gamut. As well as reducing the overall ink volume, this creates thinner individual layers.



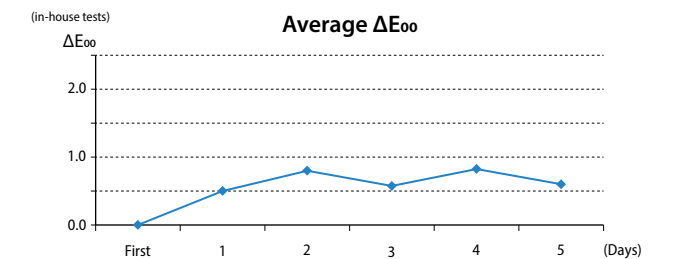
Exceptional registration accuracy and micro-droplets support security printing

Even minute text can be printed with great precision. This provides superior readability on medical, supplement and other labels with large amounts of small type information. The use of micro-droplets also supports all major types of security printing, including QR and barcodes plus dot codes and security tint patterns.

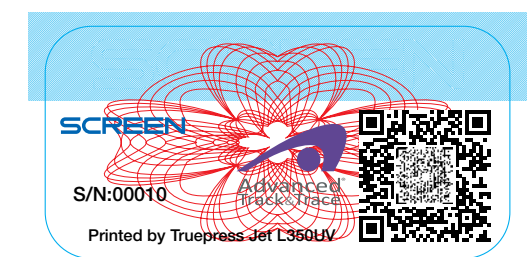
Greater output stability ensures reliable reproduction even for repeat jobs

Improved consistency during output enables high productivity while ensuring consistency at Delta E levels well below industry standards, ensuring consistent color-matching between jobs and across runs. This enables production of long run work as well as repeat and pick-up jobs.

Color variation from start to end of job



Outstanding color reproduction even for repeat jobs

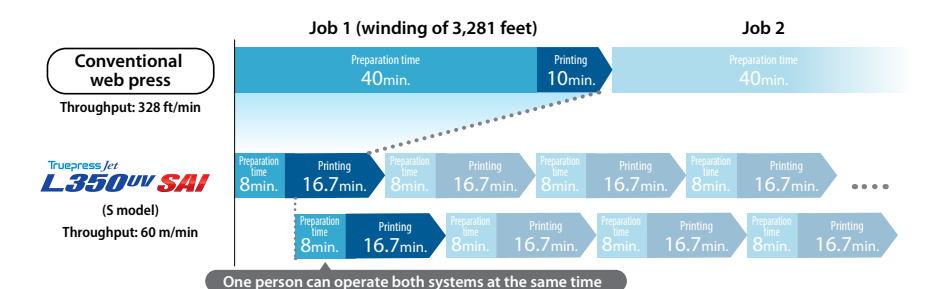


HIGH PRODUCTIVITY

Improvements in productivity enable efficient handling of mixed, medium lot and fast turnaround work

With the SAI S model and print speeds of 60 meters per minute plus dramatically shortened preparation time compared to an analog press, a single SAI system can deliver similar productivity as three analog web presses.

Throughput of Truepress Jet L350UV SAI series vs. conventional web presses



EASY OPERATION

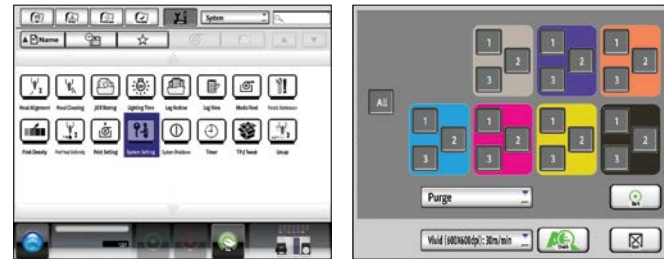
Central touch panel operation streamlines processing and boosts efficiency

All steps required for printing can now be performed directly from a system's GUI touch panel. Even daily head cleaning can be activated by pressing a single button. An operator can learn how to handle the press within one week thanks to the highly intuitive GUI.

This GUI also greatly simplifies processes such as color, spot color and media matching, even for inexperienced operators. A single operator can easily handle all stages from color matching after roll replacement right through to printing even when multiple systems are used together.

The user-friendliness of the GUI also eliminates the problems usually experienced when training new staff. This truly is a major step forward in ease of use for operators.

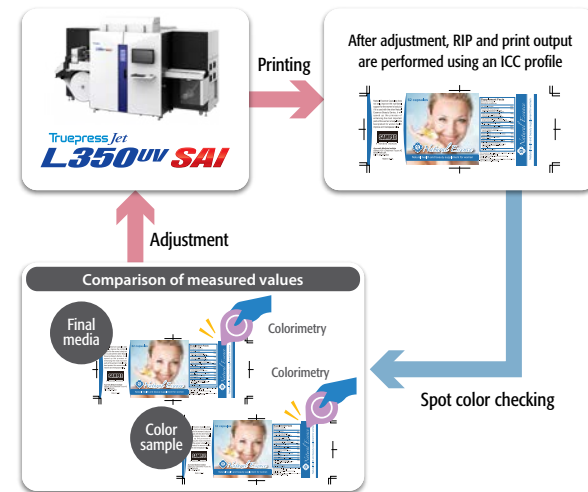
Highly intuitive GUI simplifies operation



Main operation screen

Head cleaning screen

Simplified color matching



Options

Corona Unit

Performing corona treatment onto the media before printing improves the surface and increases ink adhesion.

Web Cleaner

With its combination of a cleaning roller and adhesion roller, the web cleaner effectively removes dust including paper particles and powder. This device ensures low maintenance and stable, uninterrupted operation.

Splice Detection Sensors

The splices in joined media (splice media) are detected with dedicated sensors. Following detection, the printheads move up and down while the processing speed is maintained. This makes it possible to continue output without stopping the equipment.

Mark Sensors

The mark sensors read eye marks that have been printed in advance, allowing them to be used as references for performing high-precision registration.

Chill Roller

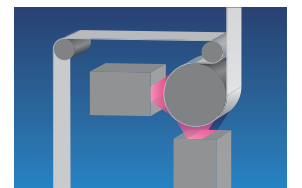
Adoption of the refrigerated chill roller has increased stability when outputting thin film media. This improved handling of thin films opens up a range of new opportunities for package printing.

* Not available for the E model. Installed as a standard feature in other models.

Double UV Lamps

SAI systems can be fitted with two newly developed high-power UV lamps,* significantly increasing ink curing.

* Not available for E model.



Network Support

Real-time maintenance minimizes down time

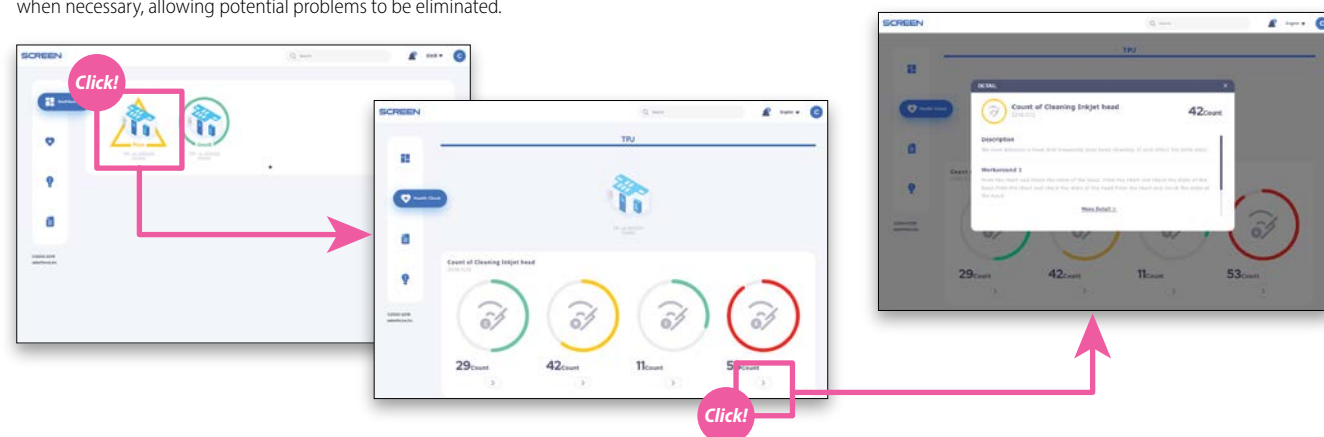
TRUST Network Service

TRUST Network Service is a proprietary support program provided by SCREEN to prevent unexpected problems. This program offers a full menu of services including predictive diagnosis based on monitoring equipment conditions, as well as regular analytical and maintenance reports. If trouble does occur, TRUST is able to identify the area of malfunction and alert the operator as well as log the instance for reporting purposes.

Health Check & Advisor

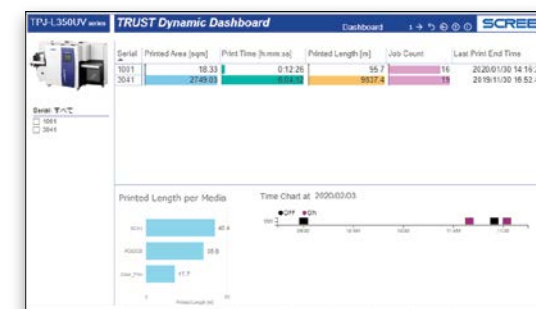
In this dashboard, operator can easily check machine's status. The analysis screen tracks the usage of consumable and other items. It also issues alerts when necessary, allowing potential problems to be eliminated.

This system automatically suggests precise solutions to issues, allowing operator intervention when possible.



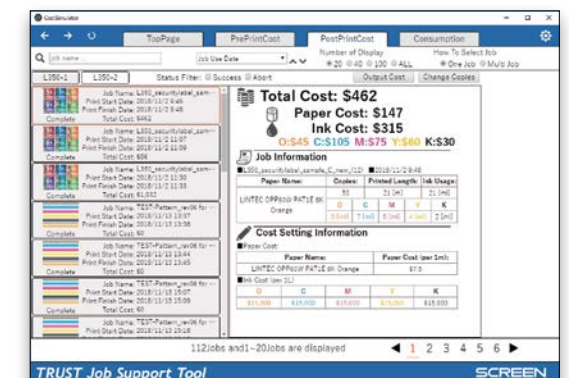
Dynamic Dashboard

The dashboard allows cloud-based monitoring of the operating status of L350UV SAI systems. Parameters such as print time, ink consumption and job progress can all be checked at a glance, helping to ensure systems are running at peak efficiency.



Job Support Tools

Usage statistics for ink, paper and other items make it possible to accurately calculate the cost of individual jobs. Job logs and consumption data can all be checked locally by users as required.

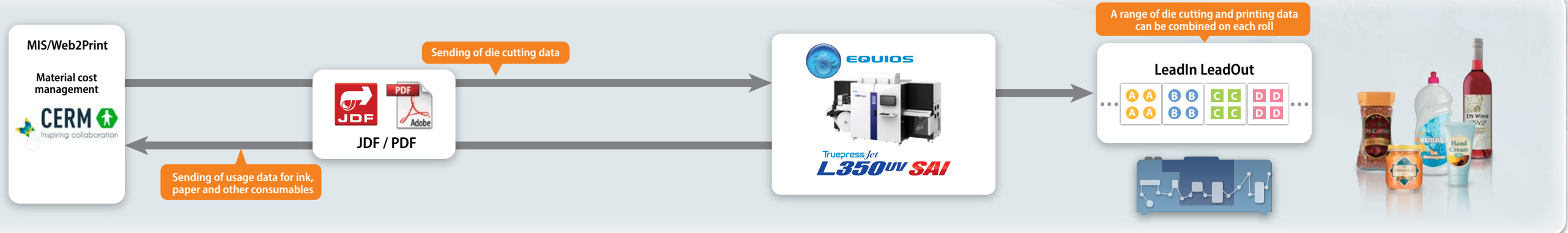


A wide range of labels can easily be created to meet the requirements of individual client workflows

BROAD APPLICATIONS

More efficient production and management

EQUIOS is able to read print data, including die cutting specifications, from an MIS or other process management system. This helps to both streamline operations and reduce costs for printing presses.



Black variable

Extra value can easily be added to jobs thanks to features such as serial number-based traceability or QR codes for promotional campaigns.



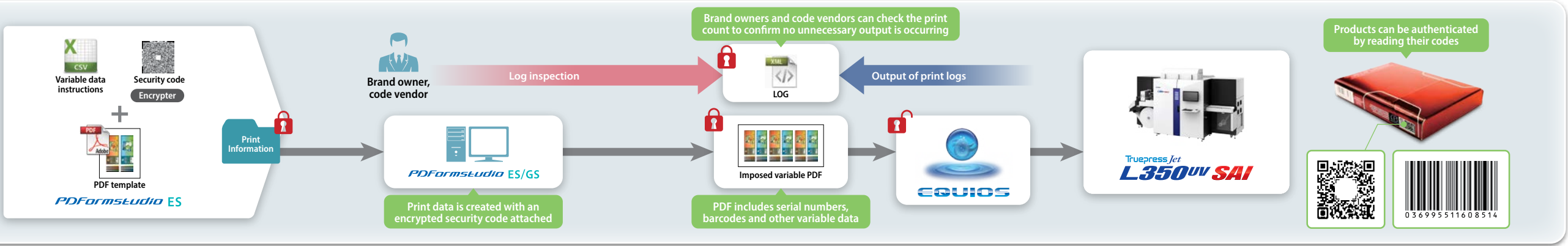
Color variable

Color variable functions enable the production of labels with greater visual impact. The ability to output multi-page PDFs also gives greater freedom in content creation.



Authentication and traceability

Valuable digital data can be reliably protected. Items such as security codes help to prevent pirating or reselling of data while clients can be notified of print counts and other details. These features effectively build trust with brand owners.



Truepress Jet L350UV SAI Series Specification

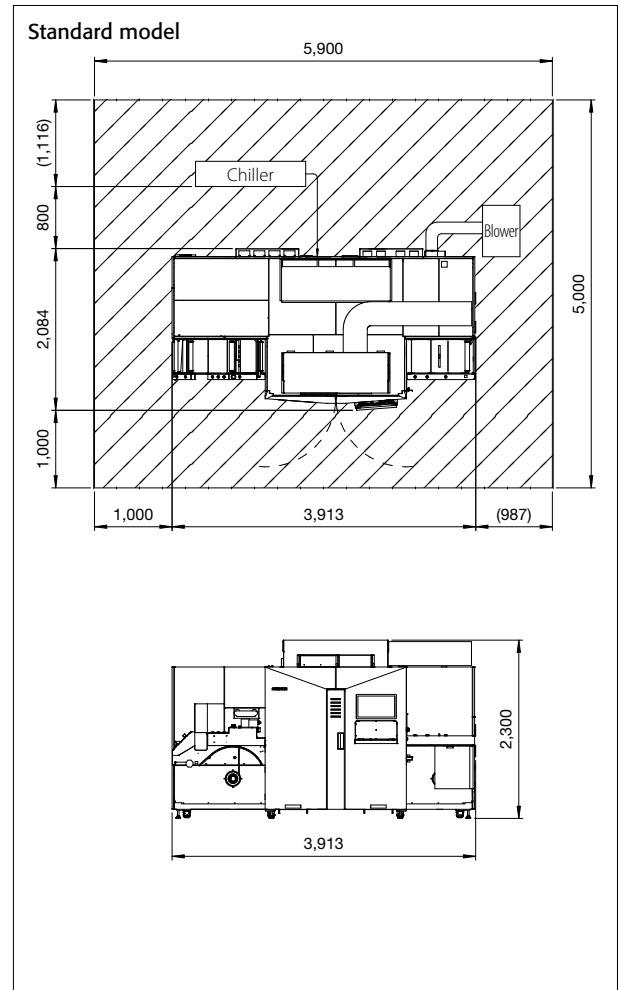
Product name	Truepress Jet L350UV SAI S
Printing system	Piezo single-pass printing
Resolution	600×600 dpi
Printing speed	207.8 ft ² (19.3 m ²) / min at 196.8 ft (60 m) / min
Printing size	Width: Maximum 12.6" (322 mm) Repeat length: 2" to 96" (50.8 mm to 2438.4 mm)
Media size	Width: 4" to 13.7" (100 mm to 350 mm) Roll diameter: Maximum 29.5" (750 mm) Weight: Maximum 264 lb (120 kg)
Media thickness	0.04 to 0.35 mm (1.6 to 13.7 mil)
Inks	Truepress inks for L350UV SAI Series Ink tank capacity: 8 liters per color Ink bottle capacity: 4 liters per color
Output configuration	CMYK + White <Standard specification> CMYK + White + Orange CMYK + White + Blue CMYK + White + Orange + Blue <i>Orange and Blue inks can be added on-site.</i>
Printheads	4-step grayscale printheads Droplet size: Minimum 3 picoliter
Printer controller & RIP	EQUIOS for L350UV SAI Series
Main options	Web cleaner, Mark sensors, Corona unit, Splice detection sensors, Chiller, Dual UV lamps, Full color variable data processing ^{*1} , Reverse feed ^{*1} MIS connection(CERM) ^{*2}
Dimension(W × D × H)/ Weight	Printer: 154.1" × 82" × 90.6" (3,913 × 2,084 × 2,300 mm) / 6,305 lb (2,860 kg)
Power requirements	Printer: Three phase, 380/400/415 V, 4 W, 50/60 Hz, 50 A ^{*3} PC: Single phase, 100/240 V, 50/60 Hz, 600 W <i>Earth leakage circuit breaker (200 mA sensed current) must be installed on the printer.</i>
Operating environment	Required temperature relative humidity: 59 to 77°F (15 to 25°C) / 40 to 70% [no condensation] Warrantied temperature and relative humidity: 64.4 to 75.2°F (18 to 24°C) / 40 to 70% [no condensation] Recommended elevation: less than 1,000 meters above sea level
Incidental utilities	Air-pressure utilities such as compressor Connection to exhaust duct

*1. These options are under development.

*2. This option is not available in all regions.

*3. A boost transformer is required when installing in 200V area.

Space Requirements (mm)



TRUST Network Service

The Truepress Jet L350UV is covered by the Network support program.

SCREEN Graphic Solutions Co., Ltd.

HEAD OFFICE

• Tenjinkita-machi 1-1, Teranouchi-agaru 4-chome, Horikawa-dori, Kamigyō-ku, Kyoto 602-8585, Japan / Tel: +81-75-414-7610

SCREEN GP Americas, LLC

• Innovation Drive, Elk Grove Village, IL 60007, U.S.A. / Tel: +1-847-870-7400 / Fax: +1-847-870-0149 www.screenamericas.com

SCREEN GP Europe B.V.

• Bouwerij 46, 1185XX Amstelveen, The Netherlands / Tel: +31-20-456-78-00 www.screeneurope.com

U.K. office / Tel: +44-1582-72-5400

SCREEN Holdings Singapore PTE. Ltd.

• 29, Kaki Bukit View, #02-00, Kaki Bukit Techpark II, Singapore 415963 / Tel: +65-6845-3288 / Fax: +65-6741-2168 www.screen.com.sg

SCREEN GP China Co., Ltd.

• Room 2001 - 2003, 20/F Cable TV Tower 9 Hoi Shing Road Tsuen Wan, N.T. Hong Kong / Tel: +852-2953-0038 / Fax: +852-2755-8683 www.screenchina.com

Shanghai office / Tel: +86-21-3126-5122 / Fax: +86-21-5218-2199

Beijing office / Tel: +86-10-6708-9271 / Fax: +86-10-6708-8395

Guangzhou office / Tel: +86-20-3887-9650 / Fax: +86-20-3887-9653

SCREEN GP Taiwan Co., Ltd.

• 4th Floor, No. 126-1, Min-tsu West Road, Taipei, Taiwan R.O.C. / Tel: +886-2-2586-2711 / Fax: +886-2-2591-4367

SCREEN HD Korea Co., Ltd.

• K-TOWER 11F, 88, Iljok-ro, Manan-gu, Anyang-si, Gyeonggi-do, 13901, Korea / Tel: +82-2-727-0860 / Fax: +82-2-727-0876 www.screen-korea.com

SCREEN GP Australia PTY., Ltd.

• Suite 15A, 2 Eden Park Drive, Macquarie Park, NSW 2113, Australia / Tel: +61-2-9016-3400 / Fax: +61-2-9016-3425 www.screenaustralia.com.au

Internet web site : www.screen.co.jp/ga

www.screenamericas.com

www.screeneurope.com

The QR code on the right can be used to check whether this brochure is the latest version.



We reserve the right to alter product design and specifications without prior notice.

No.205-189E V1-E SCI 06-20

Printed by the Truepress Jet520HD+ / SC inks