

## ColorGenius DC

Color Image Processing Software for Digital Cameras

**WORKFLOW**



Innovation & Reliability

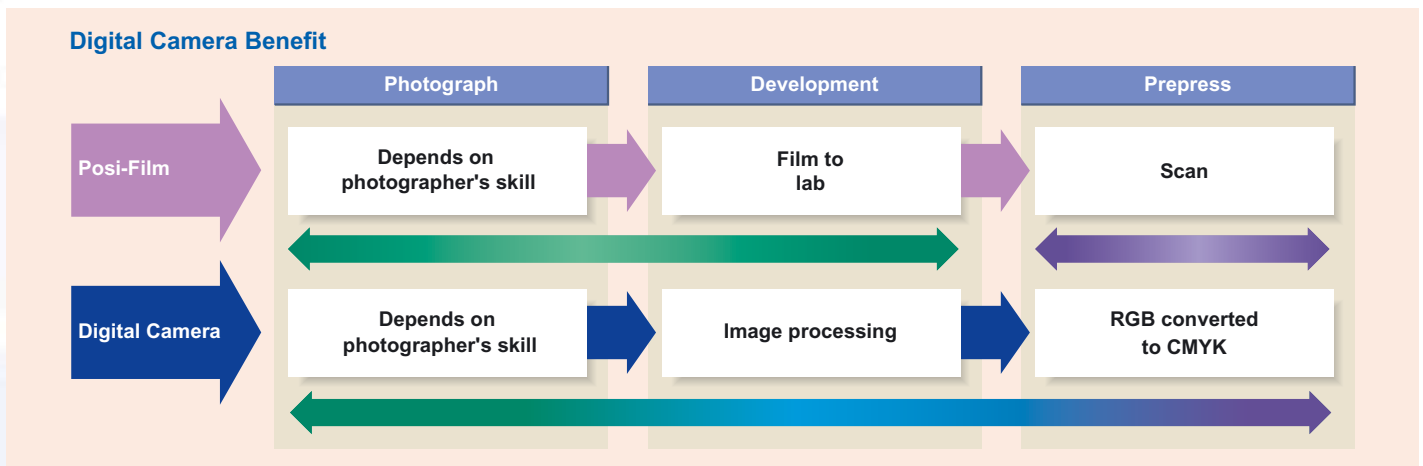
# What is ColorGenius DC?

Color Image Processing Software for Digital Cameras

**COLORGENIUS DC IS IMAGE PROCESSING SOFTWARE THAT TRANSFORMS RGB IMAGES, IMPORTED FROM A DIGITAL CAMERA, TO TOP-QUALITY CMYK OR GRAYSCALE IMAGES. COLORGENIUS DC GENERATES THE IMAGES BY TRANSFORMING SOURCE RGB FILES TO THE STANDARD RGB (SRGB) COLOR SPACE, THEN TRANSFORMING THE SRGB FILES INTO CMYK OR GRAYSCALE.**

The ColorGenius software is available in two packages: ColorGenius DC Pro and ColorGenius DC Smart. ColorGenius DC Pro contains two User applications (Clients) and one Server application. ColorGenius DC Smart is a Client application only. The Client outputs CMYK or grayscale images and the Server can be used for batch processing.

ColorGenius DC has an "Easy Setup" method that allows you to easily set up the software to output images exactly how you want. You can even refine the output using the Manual Fine Adjustment feature.



## How digital cameras improve prepress work

Color Image Processing Software for Digital Cameras

### Advantage of digital cameras

Digital cameras greatly benefit the prepress process.

In the traditional prepress workflow, several variables could affect the camera's picture quality, such as film type, the film developer's skill, and the prepress technician's knowledge. Digital cameras eliminate such variables.

### Traditional approach needs know-how

With traditional posi-film delivery, the photographer and the prepress department have their individual responsibilities. The prepress department creates the CMYK image, a process that heavily depends on professional know-how. The prepress specialist has to scan the image to produce a CMYK file, specifying paper, ink, and dot shape. The specialist also must provide image color, color correction, sharpness, mask control, and tone curve settings to create the optimum image.

### New RGB workflow

ColorGenius DC provides a new RGB workflow with digital cameras. This software generates the best quality images by transforming source RGB files directly into standard RGB files, and then transforming the standard RGB files into CMYK.

### Supported digital cameras

ColorGenius DC can be used to process images from any digital camera. However, the software provides profiles with the best-quality settings for the following cameras:

- Nikon D1X
- Nikon D100
- Canon EOS-1D
- Canon EOS-1Ds
- Canon EOS D30
- Canon EOS D60

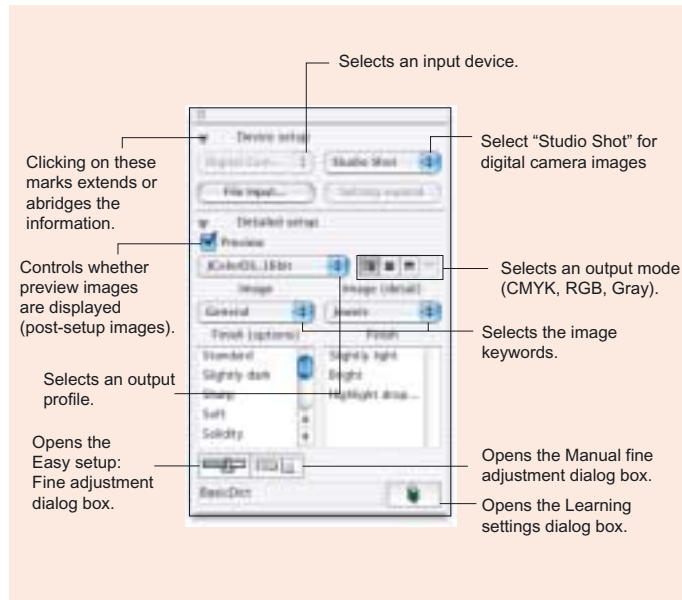
# The Easy Setup method

Select the desired properties

## Easy Setup

Using the Easy Setup method, you can enhance the quality of the images simply by selecting the desired properties from each of three categories: input image type, finished image style, and output image color mode. The input image type can be set to "General," "Portrait," "Scenery," or "Machines."

Additionally, you can configure more detailed settings for each image type. For example, for "Portrait" images, you can specify exactly how flesh tones are displayed. For the finished image style, you can choose from more than a dozen alternatives, such as "Bright," "Soft," or "High Contrast." The choices for the color mode of the output images are CMYK, Grayscale, or RGB.



## Manual Fine Adjustment

The "Manual Fine Adjustment" feature allows you to generate much more precise adjustments, for a refined touch.

## AI Setup (Artificial Intelligence Setup)

With AI Setup you can automatically analyze and set up suitable highlight and shadow points in input images. In addition, you can analyze common color components in the highlight and shadow areas and adjust the color balance of entire images by removing the cast color.

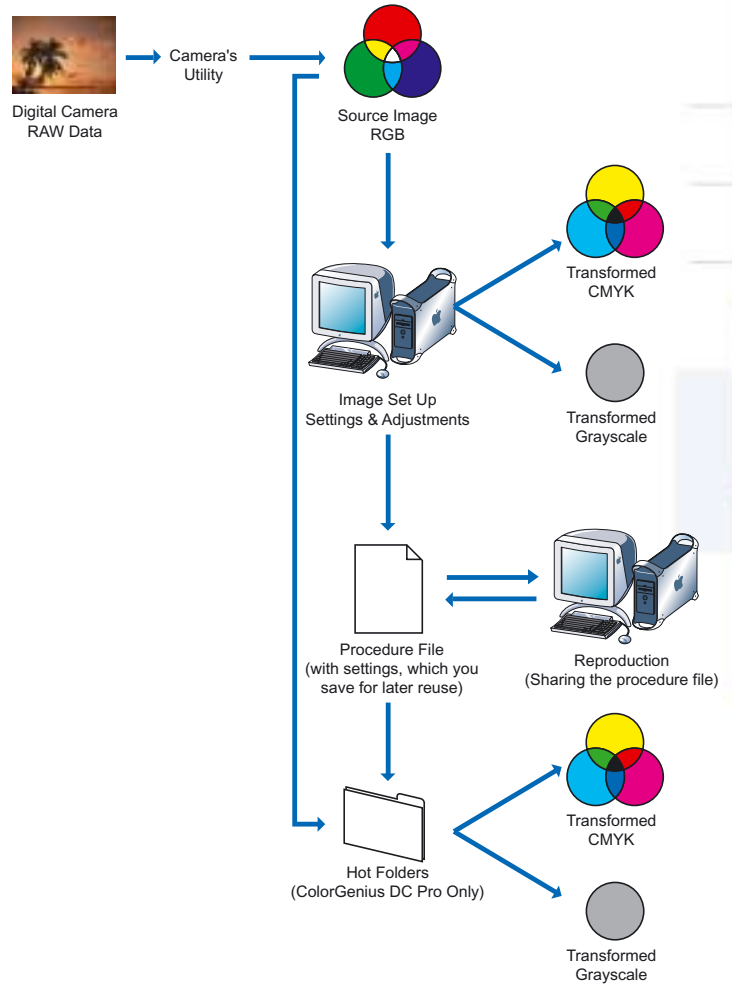
## Calibration and ColorSync simulation

ColorGenius DC uses the Mac OS ColorSync function. If you use different types of digital cameras, the input images' color may differ even when photographing the same subject. You can transform the input images' color space to ColorGenius DC's RGB color space when inputting images from the digital camera. Likewise, if you use different monitors, the color of the images displayed on the monitors may differ even when using the same image file. ColorGenius DC can display images on the monitor that simulate how the images will print when using the printer's ICC profile.

## Adjust image processing parameters

ColorGenius DC commands for adjusting the color and sharpness allow you to adjust image processing settings that match with the operating environment and the desired finishes.

## ColorGenius DC Workflow



## Procedure file

If you like the quality of a processed image, you can save the "procedure" file with the settings you used, and apply the file to similar images. By using procedure files, you can be sure that the image quality is maintained, and proof images almost immediately after a photo shoot.

The procedure file supports the RGB workflow because it allows you to automatically apply the same adjustments to multiple images. You do not have to manually adjust image settings each time.

## Hot Folder batch processing

In ColorGenius DC Pro, you can set up Hot Folders that allow you to batch process images and apply settings from a specified procedure file.

Using the Hot Folder workflow, you can quickly transform multiple images, without manually adjusting image settings.

# Easy Setup Functions

"General" Image Keyword	Description
<b>Standard</b>	Adjusts the highlight and shadow points, preserves tonal range, and corrects undesirable color casts.
<b>Foods</b>	Removes the grayness from the red and green hues in meat and vegetable images. Intensifies overall vividness, producing a cleaner image. Foods will appear more appetizing.
<b>Jewels</b>	Generates brighter highlights to illustrate the clarity and opulence of precious jewel tones.
<b>White Chinaware</b>	Increases image whiteness and produces greater detail for highlighted areas, enhancing the high-key tonal range of light china patterns.
<b>Faded color</b>	Extracts unnecessary color hues from the highlight and shadow areas to improve the color clarity.

"Portrait" Image Keyword	Description
<b>Standard</b>	Brightens flesh tones and enhances skin colors to avoid gray color cast.
<b>Flesh intensive_Light</b>	Increases highlight saturation to ensure even skin tones and reduce posterization between highlight and shadow tones.
<b>Flesh intensive_Dark</b>	Removes the color casts in shadow areas to prevent oversaturated dark skin tones.

"Scenery" Image Keyword	Description
<b>Standard</b>	Removes the dominant blue cast often associated with scenic images, while maintaining accurate levels of blue in skies and foliage.
<b>Night scenes</b>	Adjusts the low-key glare of highlights, avoiding flash color casts, while maintaining the richness of the dark tones of a nighttime scene.

"Machines" Image Keyword	Description
<b>Standard</b>	Defines the detail edges with sharpness values to produce clean, fine edges of machinery and equipment images.
<b>Domestic appliances</b>	Smooths the surface of white or pale household appliances to avoid an unnecessary textured appearance.

## System Configuration

Computer	Power Mac G3/G4
Platform	Mac OS 9.2/X Ver. 10.2.6
Disk Space	500 MB
Memory	286 MB (512 MB recommended) Client/Server 222 MB (384 MB recommended) Server only 160 MB (384 MB recommended) Client only



ColorGenius DC Pro Ver. 1.2: 2 Users/1 Server  
ColorGenius DC Smart Ver. 1.2: 1 User

## DAINIPPON SCREEN MFG. CO., LTD.

**HEAD OFFICE**  
\* Teranouchi-agaru 4-chome, Horikawa-dori, Kamigyō-ku, Kyoto, 602-8585 Japan/Phone +81-75-414-7610/Fax +81-75-414-7608

**SCREEN (USA)**  
\* 5110 Tollview Dr., Rolling Meadows, IL 60008, USA/Phone 847-870-7400/Fax 847-870-0149 www.screenusa.com

**DAINIPPON SCREEN (DEUTSCHLAND) GmbH**  
\* Mündelheimer Weg 39, 40472 Düsseldorf, Germany/Phone 0211-472701/Fax 0211-4727199/Telex 858-4438 DSDD D

**DAINIPPON SCREEN (U.K.) LTD.**  
\* Michigan Drive, Tongwell, Milton Keynes, Buckinghamshire MK15 8HT, UK/Phone 01908-848500/Fax 01908-848501 www.screen.co.uk

**DAINIPPON SCREEN (NEDERLAND) BV**  
\* Bouwerij 46, 1185XX Amstelveen, Holland/Phone 020-4567800/Fax 020-4567805 www.screen.nl

**SCREEN FRANCE**  
\* 21, Paris Nord II, 12 Rue des Chardonnerets, B.P. 50315, F-95940 ROISSY C.D.G. Cedex, France/Phone 1-48-17-86-00/Fax 1-48-17-86-01

**DAINIPPON SCREEN SINGAPORE PTE. LTD.**  
\* 29, Kaki Bukit View, Kaki Bukit Techpark II, Singapore 415963/Phone 7493833/Fax 7499010 www.screensp.com.sg

**DAINIPPON SCREEN (CHINA) LTD.**  
\* 6th Floor, 414 Kwun Tong Road, Kwun Tong, Kowloon, Hong Kong/Phone 2953-0038/Fax 2755-8683

**Beijing office** /Phone 010-6505-4974, 4976, 0405/Fax 010-6505-4975 (China)  
**Shanghai office** /Phone 021-6466-4501/Fax 021-6466-4503 (China)

**DAINIPPON SCREEN (TAIWAN) CO., LTD.**  
\* 4F No. 125-1, Ming Tsui West Rd., Taipei, Taiwan/Phone 02-25862711/Fax 02-25914367

**DAINIPPON SCREEN (KOREA) CO., LTD.**  
\* 8th Yonsei Bongsae B/D 48-3, 1Ga, Bongsae-Dong, Joong-Gu, Seoul 100-161, Korea/Phone 02-7766-786/Fax 02-7766-787

**DAINIPPON SCREEN (AUSTRALIA) PTY. LTD.**  
\* Unit 2, 207-209 Young Street, Waterloo, NSW 2017, Australia/Phone 02-9310-1314/Fax 02-9310-3566

\* Trademarks and registered trademarks used herein are the property of their respective owners.

\* This brochure was made using SPEKTA screening.

Internet web site [www.screen.co.jp](http://www.screen.co.jp)

We reserve the right to alter product design and specifications without prior notice.